



# Wizcon Supervisor™

The complete Internet-based solution for control and information

# Configuring IIS on Windows 2003 Server



---

**ELUTIONS Inc.**  
1300 East 8th Avenue  
Suite 200  
Tampa, FL 33605  
USA  
tel +1 (813) 371-5500  
fax +1 (813) 371-5501

**Wizcon Systems SAS**  
Parc Technologique de Lyon  
12 allée Irène Joliot-Curie  
F-69791 Saint-Priest Cedex  
France  
tel +33 (0)4 72 47 98 98  
fax +33 (0)4 72 47 98 99

**Wizcon Systems BV**  
Concordiaweg 149-151  
Postbus 351  
NL-4200 AJ Gorinchem  
Nederland  
tel +31 (0)183 646 303  
fax +31 (0)183 621 601

**Wizcon Systems Ltd**  
The Gate Hotel, Scotland Gate  
Northumberland  
NE62 5SS  
UK  
tel +44 (0)845 606-6120  
fax +44 (0)845 606-6121

[www.wizcon.com](http://www.wizcon.com)  
<http://support.wizcon.com>

## Overview

Windows 2003 Server includes IIS version 6. Changes in IIS mean that some changes must be made in order that the Web capabilities of Wizcon Supervisor™ function in the same way as they do on other operating systems.

These changes will be made automatically for you when you install Wizcon Supervisor™.

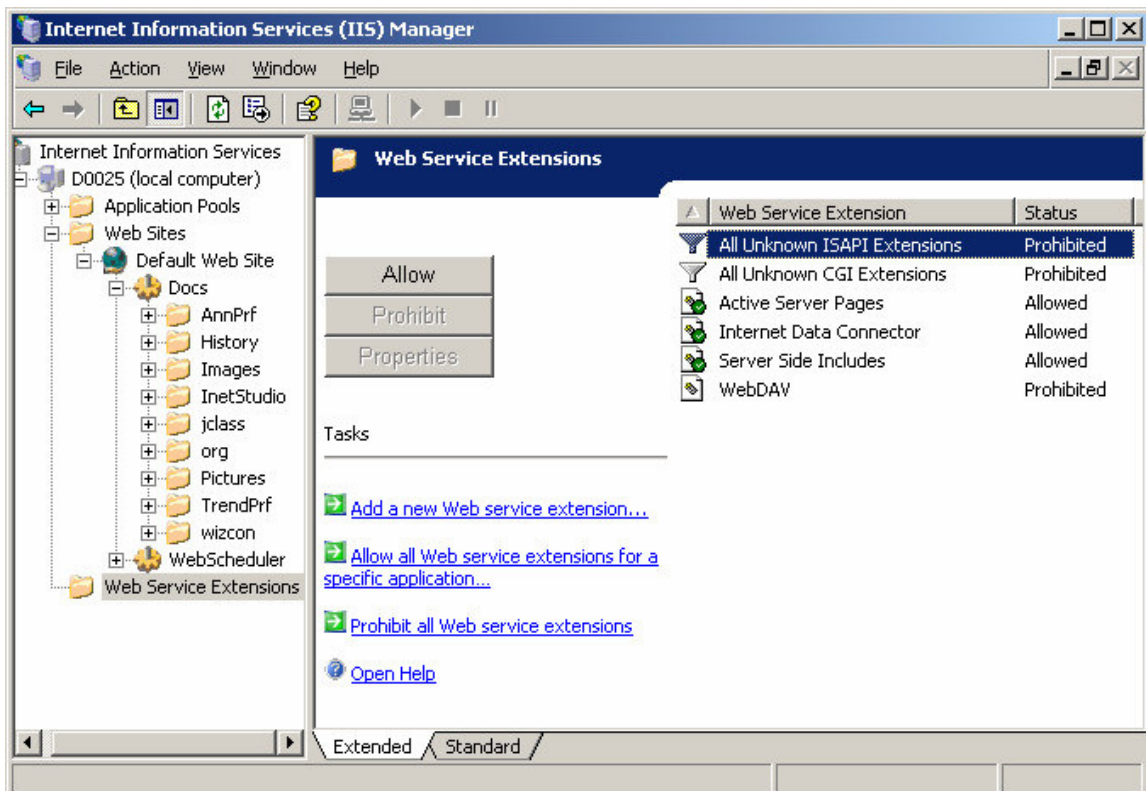
However, this document describes how to perform this operation if problems occur.

Important note: When installing Windows 2003 Server, ensure that IIS is installed with ASP support.

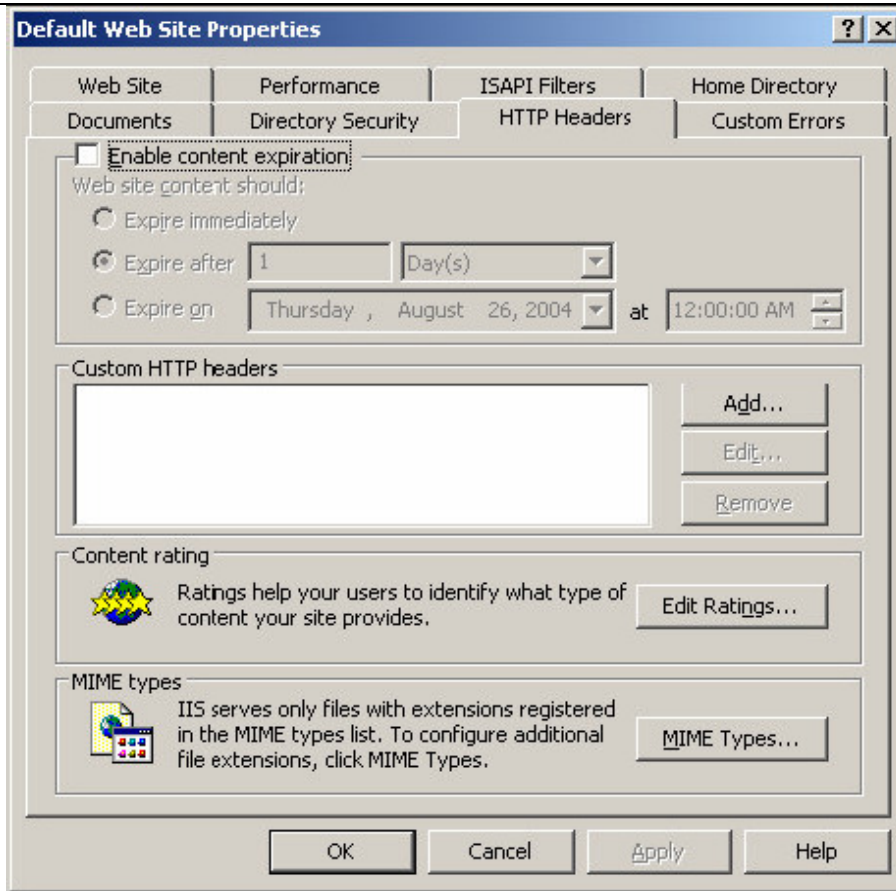
## Configuring IIS

Follow the instructions below in order to configure IIS correctly.

1. Go to the Control Panel, Administrative Tools and launch IIS Manager.
2. Go to the Web Service Extensions tab of IIS and allow the following extension: ASP – Active Server Pages (as shown on the figure below).

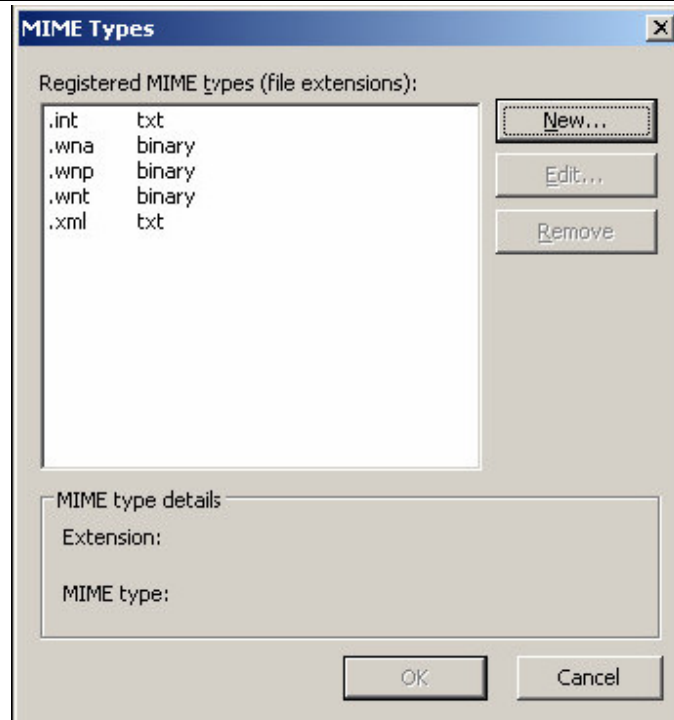


3. Open Default Web Site Properties dialog and go to "HTTP Headers" tab:



4. Open the "MIME Types" windows definition and define the following extension types as shown in the figure below:
  - a. int as txt.
  - b. wna as binary.
  - c. wnp as binary.
  - d. wnt as binary.
  - e. xml as txt.

Please be aware that any changes to MIME Types in the root directory of IIS may cause a loss of the configuration mentioned above.



IIS is now configured and you can start using Wizcon web functionality.